



**Parade of Homes Fixed Site- Eaglepointe 2012**  
**[www.2012UtahParadeofHomes.com](http://www.2012UtahParadeofHomes.com)**



**Contact Information:**

Shandell Smoot  
801.652.1771 (mobile and text)  
shandellsmoot@gmail.com

**Important Dates:**

January 15, 2012 - Close By Date  
June 21, 2012 - VIP Night  
June 22 to July 8, 2012 - Parade of Homes



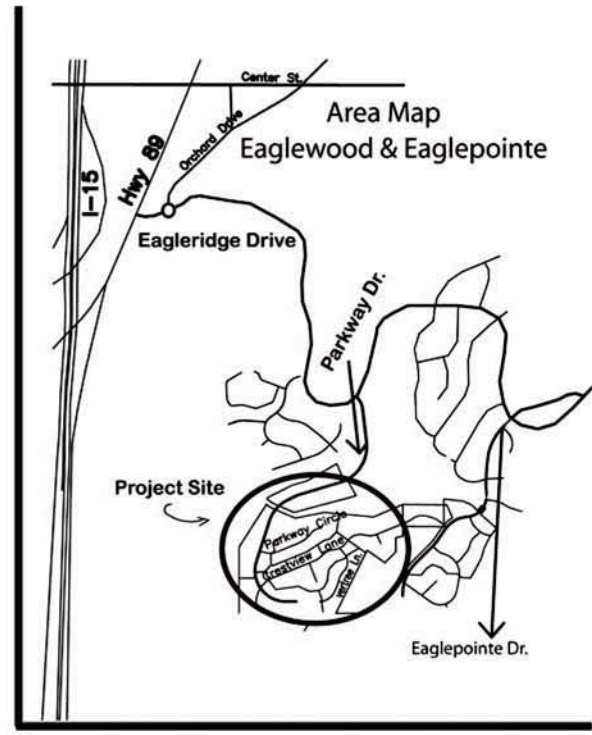
We are excited to be the Fixed Site of the 2012 Parade of Homes. The Parade will take place from June 22 to July 8, 2012. This packet includes material that all home builders should know about this amazing location. Please look over the included plat maps, area maps, CC&Rs, and pricing sheets. Below is additional information about building a home in Eaglepointe:

- Located in the beautiful foothills of North Salt Lake
- Million dollar views of the Great Salt Lake and surrounding mountains
- Close to the Eaglewood Golf Course
- Next to the Eaglewood Tennis & Swim Club
- Easy access to I-15 and only minutes away from the SLC Airport
- Just 10 minutes from downtown Salt Lake City and the new City Creek Center
- Convenient access to the shoreline trail system
- Other available lots in the same area
- Lots are ready to be built on
- Fixed site increases traffic and exposure
- Previous fixed sites in Eaglepointe were successful (estimate of almost 20,000 visitors)
- Developer subordination of up to 25%
- Incentives for builders to purchase lots
- Financial institutes willing to give spec loans for this site
- Cul-de-sac street with entry monuments

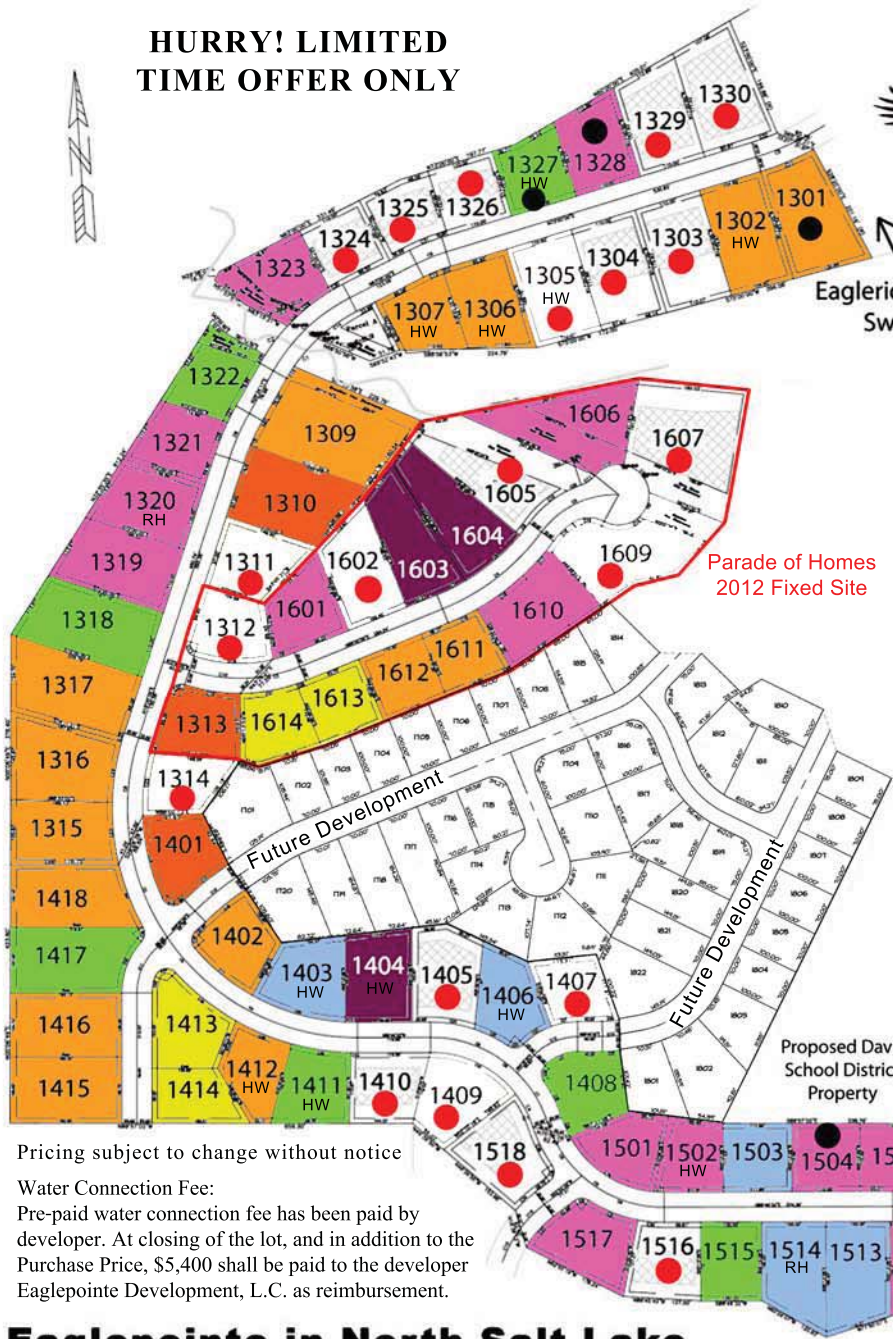
We look forward to working with the home builders and vendors to ensure that the 2012 Parade of Homes is a great success. For more information call Shandell Smoot at 801-652-1771.

**[www.2012UtahParadeofHomes.com](http://www.2012UtahParadeofHomes.com)**

**HURRY! LIMITED TIME OFFER ONLY**

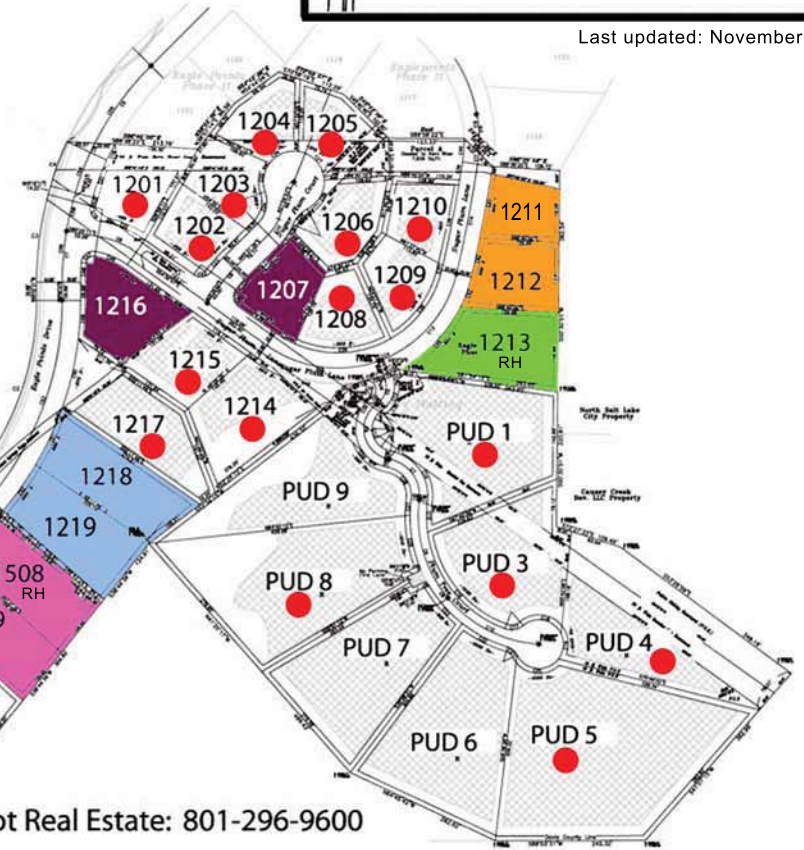


Last updated: November 3, 2011



- Under Contract
- Sold
- \$106,900
- \$126,900
- \$146,900
- \$166,900
- \$186,900
- \$216,900
- \$236,900

Limited time pricing - subject to change



Pricing subject to change without notice

Water Connection Fee:  
Pre-paid water connection fee has been paid by developer. At closing of the lot, and in addition to the Purchase Price, \$5,400 shall be paid to the developer Eaglepointe Development, L.C. as reimbursement.

**Eaglepointe in North Salt Lake**

**Hurry, because lots are going fast!**

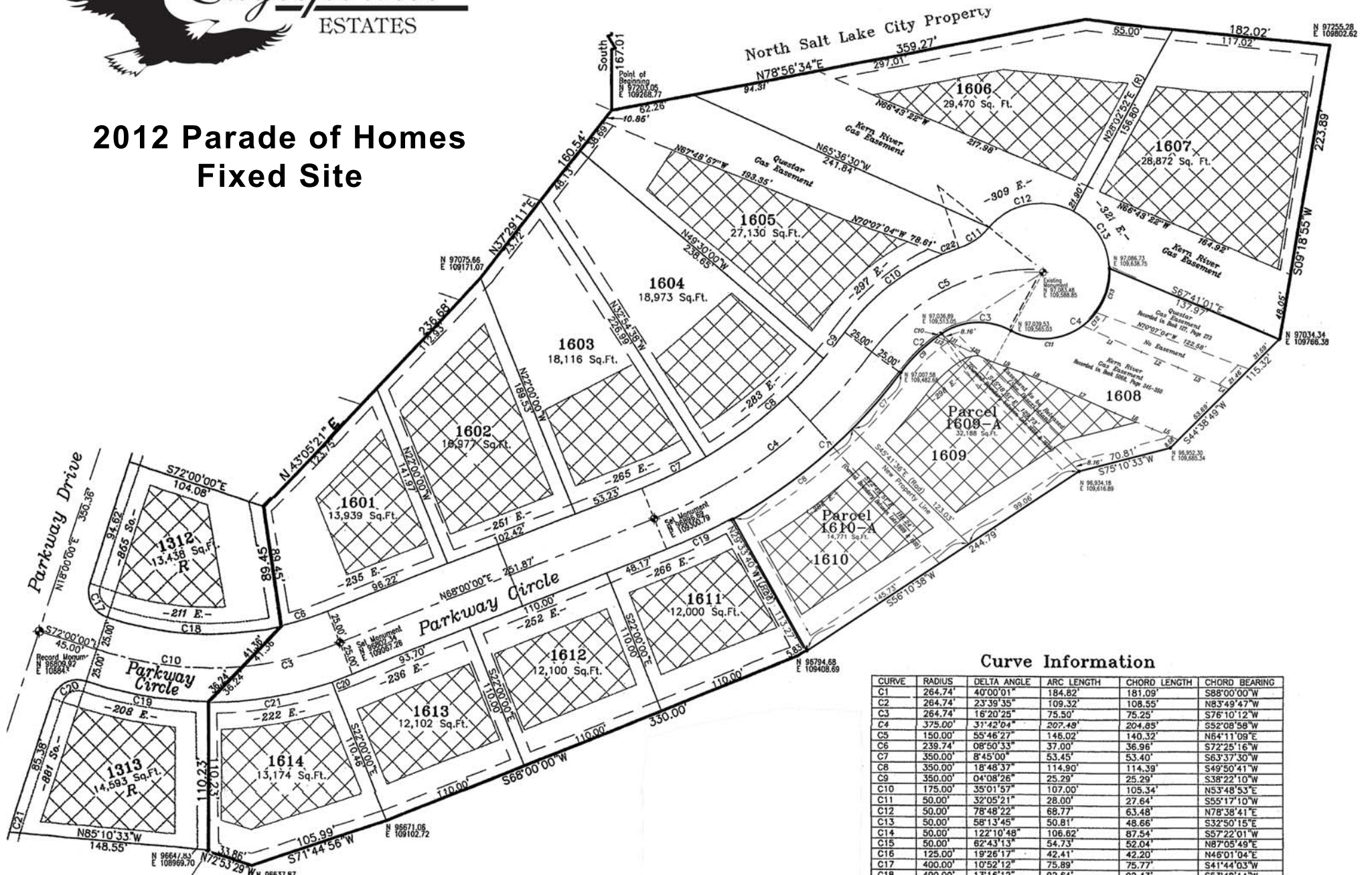
Sky Properties: 801-292-1400

Cannon Real Estate: 801-295-3397

Smoot Real Estate: 801-296-9600



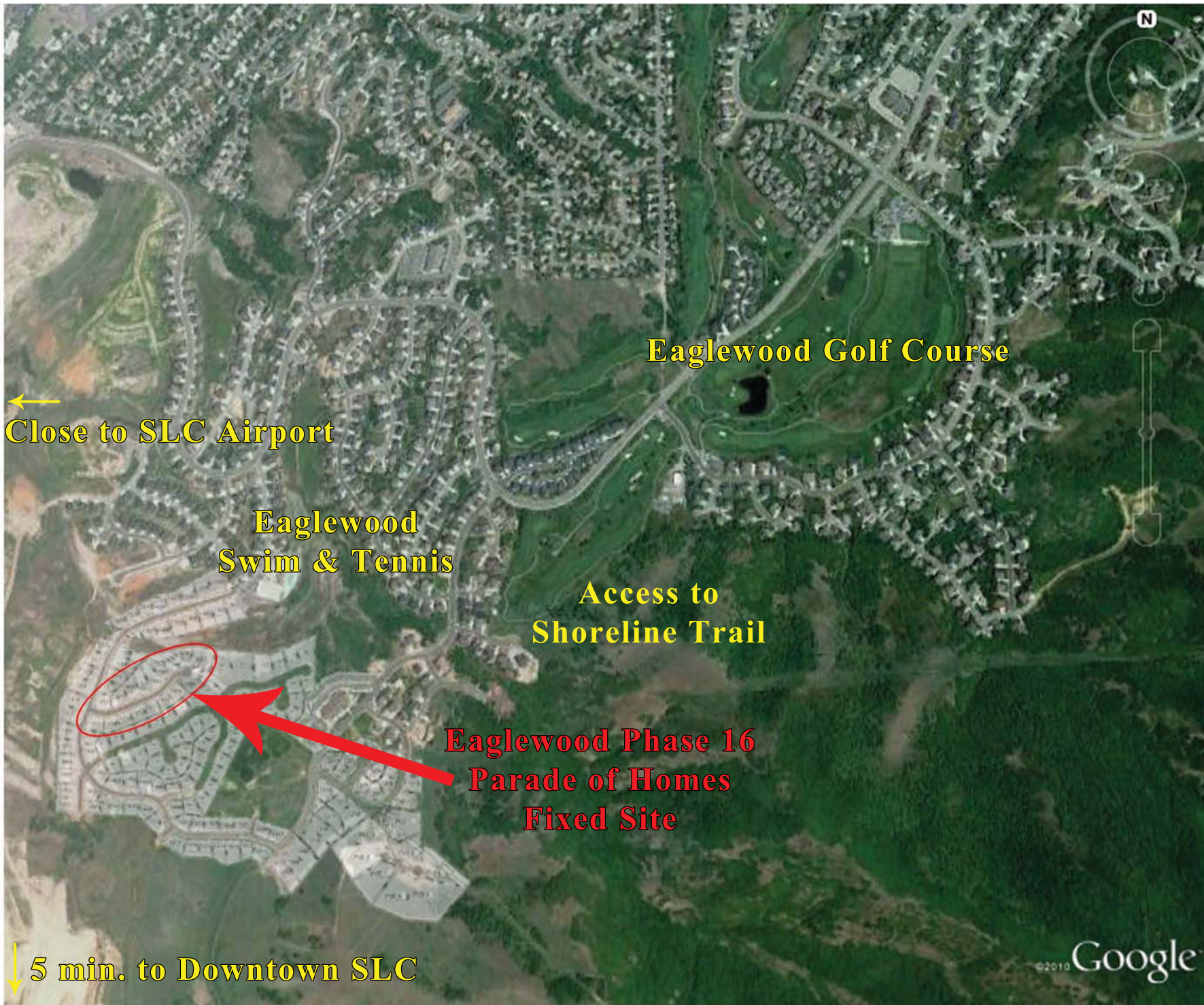
# 2012 Parade of Homes Fixed Site



Curve Information

CURVE	RADIUS	DELTA ANGLE	ARC LENGTH	CHORD LENGTH	CHORD BEARING
C1	264.74'	40°00'01"	184.82'	181.09'	S88°00'00"W
C2	264.74'	23°39'35"	109.32'	108.55'	N83°49'47"W
C3	264.74'	16°20'25"	75.50'	75.25'	S76°10'12"W
C4	375.00'	31°42'04"	207.48'	204.85'	S52°08'58"W
C5	150.00'	55°46'27"	146.02'	140.32'	N64°11'09"E
C6	239.74'	08°50'33"	37.00'	36.96'	S72°25'16"W
C7	350.00'	8°45'00"	53.45'	53.40'	S63°37'30"W
C8	350.00'	18°48'37"	114.90'	114.39'	S49°50'41"W
C9	350.00'	04°08'26"	25.29'	25.29'	S38°22'10"W
C10	175.00'	35°01'57"	107.00'	105.34'	N53°48'53"E
C11	50.00'	32°05'21"	28.00'	27.64'	S55°17'10"W
C12	50.00'	78°48'22"	68.77'	63.48'	N78°38'41"E
C13	50.00'	58°13'45"	50.81'	48.66'	S32°50'15"E
C14	50.00'	122°10'48"	106.82'	87.54'	S57°22'01"W
C15	50.00'	62°43'13"	54.73'	52.04'	N87°05'49"E
C16	125.00'	19°26'17"	42.41'	42.20'	N48°01'04"E
C17	400.00'	10°52'12"	75.89'	75.77'	S41°44'03"W
C18	400.00'	13°16'12"	92.64'	92.43'	S53°48'14"W
C19	400.00'	07°33'39"	52.79'	52.75'	S64°13'10"W
C20	289.74'	03°13'28"	16.31'	16.30'	S69°36'44"W
C21	289.74'	18°32'39"	93.78'	93.37'	S80°29'48"W
C22	175.00'	4°18'14"	13.15'	13.14'	S69°10'44"W
C23	50.00'	40°29'33"	35.34'	34.61'	S16°31'24"W

For more information  
Call 801-936-5000



← Close to SLC Airport

Eaglewood Golf Course

Eaglewood  
Swim & Tennis

Access to  
Shoreline Trail

Eaglewood Phase 16  
Parade of Homes  
Fixed Site

↓ 5 min. to Downtown SLC

**Eaglewood Phase 16  
Parade of Homes  
Fixed Site**

**Eaglewood  
Swim & Tennis Club**

**Eaglewood  
Golf Course**



**Eaglepointe Estates 13-16  
CC&R Building Requirements**

Lot No.'s	1301-1314 1401-1402 1413-1418	1315-1330	1403-1412 and Phase 16	Phase 15
Single Story	1,800	2,000	2,200	2,200
Two Story	1,400 - Main 2,700 - Upper Two	1,400 - Main 2,700 - Upper Two	1,400 - Main 2,700 - Upper Two	1,400 - Main 2,700 - Upper Two
Multi-Level	2,700 and 60' in length <b>or</b> 2,800	2,700 and 60' in length <b>or</b> 2,800	2,700 and 60' in length <b>or</b> 2,800	2,700 and 60' in length <b>or</b> 2,800
Building Materials	80% Stone, Brick or Stucco (Hardi Plank can qualify for up to 60%)	80% Stone, Brick or Stucco (Hardi Plank can qualify for up to 60%)	80% Stone, Brick or Stucco (Hardi Plank can qualify for up to 60%)	80% Stone, Brick or Stucco ( <b>Hardi Plank does not qualify</b> )

Basement Areas do **not** count towards the square footage calculations.